



Cattle on Feed

ISSN: 1948-9080

Released November 18, 2011, by the National Agricultural Statistics Service (NASS), Agricultural Statistics Board, United States Department of Agriculture (USDA).

United States Cattle on Feed Up 4 Percent

Cattle and calves on feed for slaughter market in the United States for feedlots with capacity of 1,000 or more head totaled 11.9 million head on November 1, 2011. The inventory was 4 percent above November 1, 2010. This is the second highest November 1 inventory since the series began in 1996.

Placements in feedlots during October totaled 2.49 million, 1 percent below 2010. Net placements were 2.40 million head. During October, placements of cattle and calves weighing less than 600 pounds were 805,000, 600-699 pounds were 600,000, 700-799 pounds were 501,000, and 800 pounds and greater were 585,000.

Marketings of fed cattle during October totaled 1.79 million, 3 percent above 2010.

Other disappearance totaled 93,000 during October, 50 percent above 2010.

Number of Cattle on Feed, Placements, Marketings, and Other Disappearance on 1,000+ Capacity Feedlots – United States: November 1, 2010 and 2011

Item	Number		Percent of previous year
	2010	2011	
	(1,000 head)	(1,000 head)	(percent)
On feed October 1	10,788	11,312	105
Placed on feed during October	2,505	2,491	99
Fed cattle marketed during October	1,734	1,786	103
Other disappearance during October	62	93	150
On feed November 1	11,497	11,924	104

Number of Cattle on Feed, Placements, Marketings, and Other Disappearance on 1,000+ Capacity Feedlots – United States: October 1, 2010 and 2011

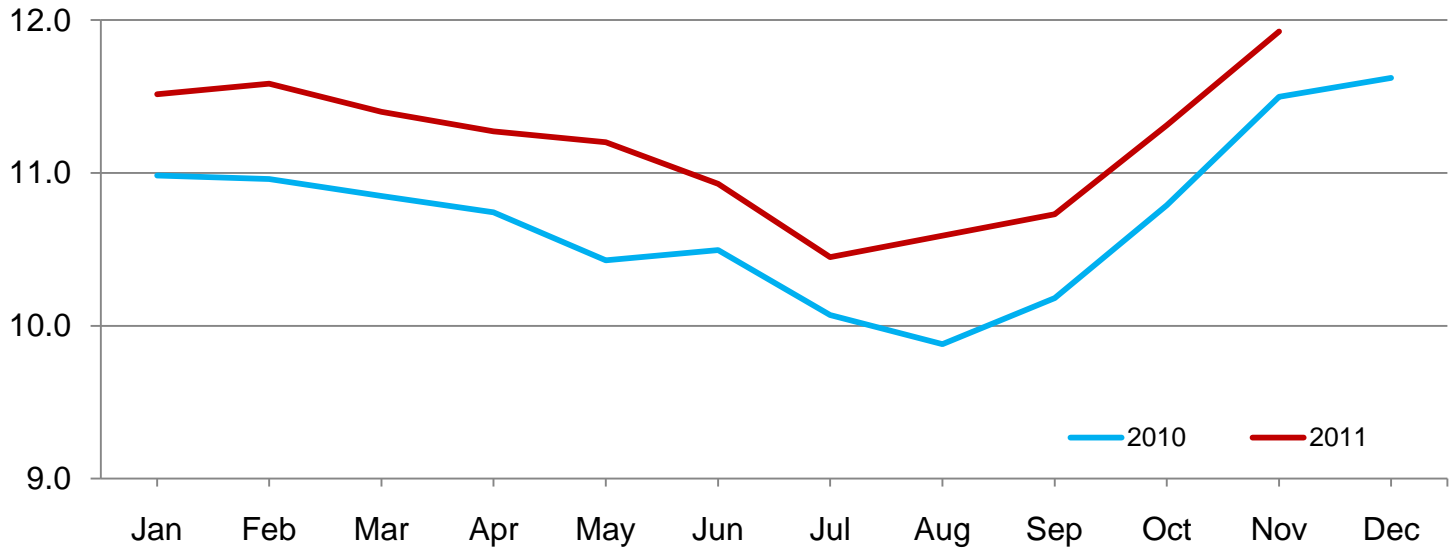
Item	Number		Percent of previous year
	2010	2011	
	(1,000 head)	(1,000 head)	(percent)
On feed September 1	10,181	10,730	105
Placed on feed during September	2,463	2,469	100
Fed cattle marketed during September	1,802	1,813	101
Other disappearance during September	54	74	137
On feed October 1	10,788	11,312	105

Number of Cattle on Feed on 1,000+ Capacity Feedlots by Month – States and United States: 2010 and 2011

State	November 1, 2010	October 1, 2011	November 1, 2011		
			Number	Percent of previous year	Percent of previous month
	(1,000 head)	(1,000 head)	(1,000 head)	(percent)	(percent)
Arizona	251	280	292	116	104
California	460	490	495	108	101
Colorado	1,090	1,070	1,140	105	107
Idaho	220	220	225	102	102
Iowa	610	570	590	97	104
Kansas	2,400	2,320	2,380	99	103
Nebraska	2,420	2,210	2,470	102	112
Oklahoma	385	370	390	101	105
South Dakota	230	205	240	104	117
Texas	2,820	2,950	3,030	107	103
Washington	197	208	226	115	109
Other States	414	419	446	108	106
United States	11,497	11,312	11,924	104	105

Cattle on Feed Inventory on 1,000+ Capacity Feedlots – United States

Million head

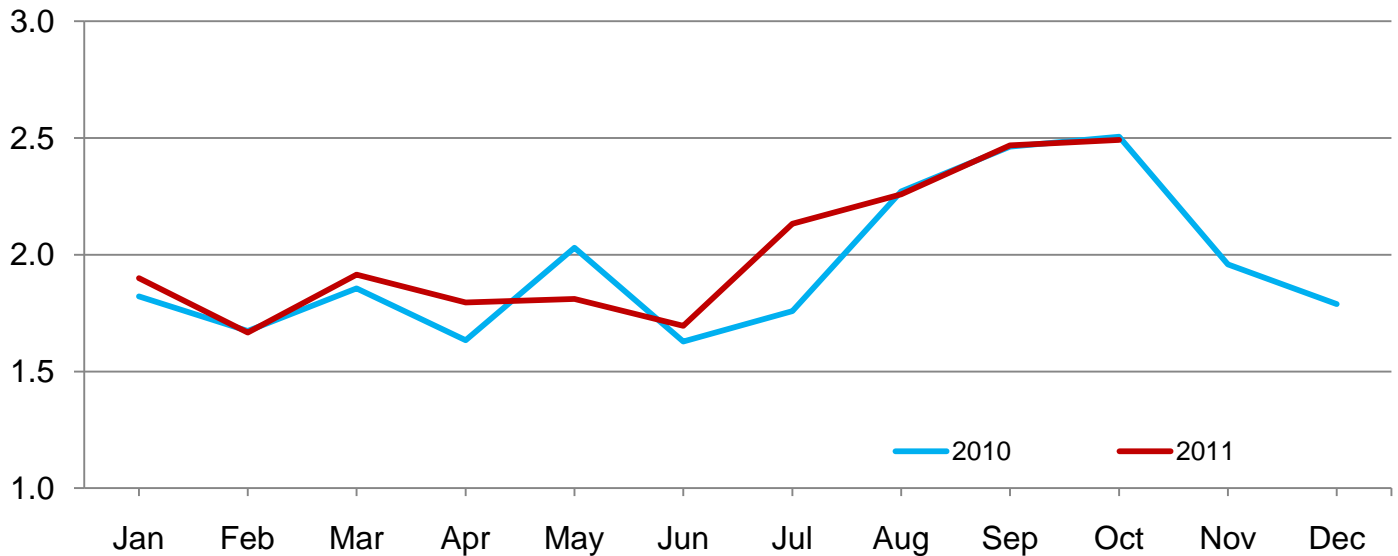


Number of Cattle Placed on Feed on 1,000+ Capacity Feedlots by Month – States and United States: 2010 and 2011

State	During October 2010 (1,000 head)	During September 2011 (1,000 head)	During October 2011		
			Number (1,000 head)	Percent of previous year (percent)	Percent of previous month (percent)
Arizona	32	19	32	100	168
California	65	70	58	89	83
Colorado	270	275	230	85	84
Idaho	53	67	55	104	82
Iowa	142	115	137	96	119
Kansas	435	500	425	98	85
Nebraska	580	560	665	115	119
Oklahoma	80	88	86	108	98
South Dakota	70	51	75	107	147
Texas	640	560	570	89	102
Washington	53	54	59	111	109
Other States	85	110	99	116	90
United States	2,505	2,469	2,491	99	101

Number of Cattle Placed on 1,000+ Capacity Feedlots – United States

Million head



Number of Cattle Placed on Feed by Weight Group on 1,000+ Capacity Feedlots by Month – States and United States: 2010 and 2011

State	During October									
	Under 600 lbs		600-699 lbs		700-799 lbs		800+ lbs		Total	
	2010	2011	2010	2011	2010	2011	2010	2011	2010	2011
	(1,000 head)	(1,000 head)	(1,000 head)	(1,000 head)	(1,000 head)	(1,000 head)	(1,000 head)	(1,000 head)	(1,000 head)	(1,000 head)
Colorado	55	60	55	50	60	50	100	70	270	230
Kansas	90	110	115	115	125	110	105	90	435	425
Nebraska	170	185	160	180	90	110	160	190	580	665
Texas	220	220	190	140	145	130	85	80	640	570
Other States	190	230	120	115	95	101	175	155	580	601
United States	725	805	640	600	515	501	625	585	2,505	2,491

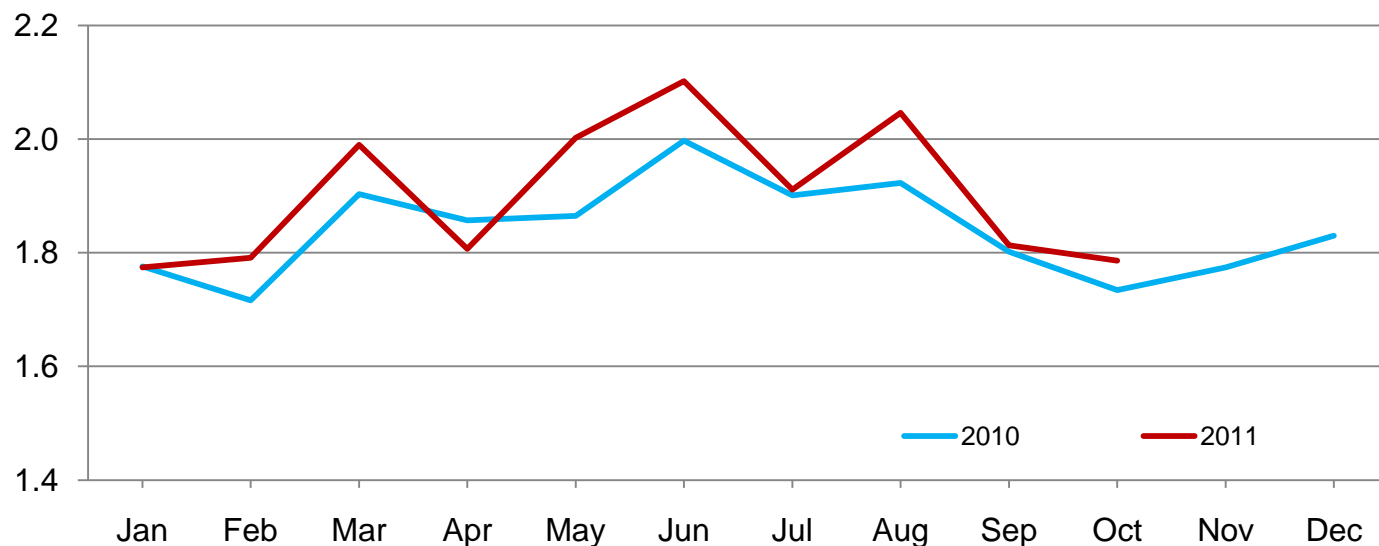
State	During September									
	Under 600 lbs		600-699 lbs		700-799 lbs		800+ lbs		Total	
	2010	2011	2010	2011	2010	2011	2010	2011	2010	2011
	(1,000 head)	(1,000 head)	(1,000 head)	(1,000 head)	(1,000 head)	(1,000 head)	(1,000 head)	(1,000 head)	(1,000 head)	(1,000 head)
Colorado	35	40	35	25	65	60	160	150	295	275
Kansas	75	120	110	110	160	140	165	130	510	500
Nebraska	75	100	80	80	130	110	255	270	540	560
Texas	190	280	165	125	145	85	80	70	580	560
Other States	135	145	65	75	103	109	235	245	538	574
United States	510	685	455	415	603	504	895	865	2,463	2,469

Number of Cattle Marketed on 1,000+ Capacity Feedlots by Month – States and United States: 2010 and 2011

State	During October 2010	During September 2011	During October 2011		
			Number	Percent of previous year	Percent of previous month
	(1,000 head)	(1,000 head)	(1,000 head)	(percent)	(percent)
Arizona	20	21	19	95	90
California	48	49	48	100	98
Colorado	170	185	155	91	84
Idaho	37	41	48	130	117
Iowa	100	92	115	115	125
Kansas	350	375	345	99	92
Nebraska	370	350	390	105	111
Oklahoma	63	79	63	100	80
South Dakota	44	35	39	89	111
Texas	445	490	460	103	94
Washington	36	38	40	111	105
Other States	51	58	64	125	110
United States	1,734	1,813	1,786	103	99

Number of Cattle Marketed on 1,000+ Capacity Feedlots – United States

Million head



Other Disappearance on 1,000+ Capacity Feedlots by Month – States and United States: 2010 and 2011

State	During October 2010 (1,000 head)	During September 2011 (1,000 head)	During October 2011		
			Number (1,000 head)	Percent of previous year (percent)	Percent of previous month (percent)
Arizona	1	1	1	100	100
California	2	6	5	250	83
Colorado	10	10	5	50	50
Idaho	1	1	2	200	200
Iowa	2	3	2	100	67
Kansas	15	15	20	133	133
Nebraska	10	10	15	150	150
Oklahoma	2	4	3	150	75
South Dakota	1	1	1	100	100
Texas	15	20	30	200	150
Washington	1	1	1	100	100
Other States	2	2	8	400	400
United States	62	74	93	150	126

Terms and Definitions of Cattle on Feed Estimates

Cattle on feed are animals being fed a ration of grain, silage, hay and/or protein supplement for slaughter market that are expected to produce a carcass that will grade select or better. It excludes cattle being "backgrounded only" for later sale as feeders or later placement in another feedlot.

Placements are cattle put into a feedlot, fed a ration which will produce a carcass that will grade select or better, and are intended for the slaughter market.

Marketings are cattle shipped out of feedlots to a slaughter market.

Other disappearance includes death loss, movement from feedlots to pasture, and shipments to other feedlots for further feeding.

Reliability of Cattle on Feed Estimates

Survey Procedures: During January and July all known feedlots in the United States with capacity of 1,000 or more head are surveyed to provide data for cattle on feed estimates. During the other months, all known feedlots from 16 States are surveyed. The 16 States account for approximately 98 percent of the cattle on feed in feedlots with capacity of 1,000 or more head. Individual State estimates are published monthly for 11 of the 16 States. Data collected from the remaining 5 States are used to establish the "Other States" estimates. These 5 States include Illinois, Minnesota, New Mexico, Oregon, and Wyoming. The "Other States" category represents all cattle on feed with a capacity of 1,000 or more head for the rest of the United States.

Estimating Procedures: These cattle on feed estimates were prepared by the Agricultural Statistics Board after reviewing recommendations and analysis submitted by each State office. Regional and State survey data were reviewed for reasonableness with each other and with estimates from the previous month when establishing the current estimates.

Revision Policy: Revisions to previous estimates are made to improve month to month relationships. Estimates for the previous month are subject to revision in all States each month when current estimates are made. In February, all monthly estimates for the previous year, and the number of feedlots and annual marketings from two years ago are reviewed and subject to revisions. The reviews are primarily based on slaughter data, state check-off or brand data, and any other data that may have been received after the original estimate was made. Estimates will also be reviewed after data from the Census of Agriculture are available. No revisions will be made after that date and estimates become final.

Reliability: Since all 1,000+ capacity cattle on feed operators in every State are not included in the monthly survey, survey estimates are subject to sampling variability. Survey results are also subject to non-sampling errors such as omissions, duplications, and mistakes in reporting, recording, and processing the data. The effects of these errors cannot be measured directly. They are minimized through rigid quality controls in the data collection process and through a careful review of all reported data for consistency and reasonableness.

To assist users in evaluating the reliability of estimates in this report, the "**Root Mean Square Error**" is shown for selected items in the table on the following page. The "Root Mean Square Error" is a statistical measure based on past performance and is computed using the differences between first and latest estimates. The "Root Mean Square Error" for cattle on feed inventory estimates over the past 24 months is 0.1 percent. This means that chances are 2 out of 3 that the final estimate will not be above or below the current estimate of 11.9 million head by more than 0.1 percent. Chances are 9 out of 10 that the difference will not exceed 0.2 percent.

The table on the following page shows a 24 month record of the range of differences between first and latest estimates for selected items. Using estimates of number on feed as an example, changes between the first estimate and the latest estimate during the past 24 months have averaged 10,000 head, ranging from 0 to 37,000 head. During this period the initial estimate has been above the latest estimate 10 times and has been below the latest estimate 10 times. This does not imply that the initial estimate is likely to understate or overstate final inventory.

Reliability of Monthly Cattle on Feed Estimates

[Based on data for the past 24 months]

Item	Root mean square error	90 percent confidence level	Difference between first and latest estimate				
			Average	Smallest	Largest	Months	
						Below latest	Above latest
	(percent)	(percent)	(1,000)	(1,000)	(1,000)	(number)	(number)
Number on feed	0.1	0.2	10	0	37	10	10
Placements	0.4	0.7	4	0	20	11	7
Marketings	0.1	0.2	1	0	4	8	6

Information Contacts

Listed below are the commodity specialists in the Livestock Branch of the National Agricultural Statistics Service to contact for additional information. E-mail inquiries may be sent to nass@nass.usda.gov

Dan Kerestes, Chief, Livestock Branch	(202) 720-3570
Scott Hollis, Head, Livestock Section	(202) 690-2424
Travis Averill – Dairy Products Prices	(202) 690-2168
Sherry Bertramsen – Livestock Slaughter	(515) 284-4340
Doug Bounds – Hogs and Pigs	(202) 720-3106
Jason Hardegree – Cattle, Cattle on Feed	(202) 720-3040
Mike Miller – Milk Production and Milk Cows	(202) 720-3278
Everett Olbert – Dairy Products Prices	(202) 720-4751
Lorie Warren – Dairy Products	(202) 690-3236

Access to NASS Reports

For your convenience, you may access NASS reports and products the following ways:

- All reports are available electronically, at no cost, on the NASS web site: <http://www.nass.usda.gov>
- Both national and state specific reports are available via a free e-mail subscription. To set-up this free subscription, visit <http://www.nass.usda.gov> and in the “Receive NASS Updates” box under “Receive reports by Email,” click on “National” or “State” to select the reports you would like to receive.
- Printed reports may be purchased from the National Technical Information Service (NTIS) by calling toll-free (800) 999-6779, or (703) 605-6220 if calling from outside the United States or Canada. Accepted methods of payment are Visa, MasterCard, check, or money order.

For more information on NASS surveys and reports, call the NASS Agricultural Statistics Hotline at (800) 727-9540, 7:30 a.m. to 4:00 p.m. ET, or e-mail: nass@nass.usda.gov.

The United States Department of Agriculture (USDA) prohibits discrimination in all its programs and activities on the basis of race, color, national origin, age, disability, and where applicable, sex, marital status, familial status, parental status, religion, sexual orientation, political beliefs, genetic information, reprisal, or because all or a part of an individual's income is derived from any public assistance program. (Not all prohibited bases apply to all programs.) Persons with disabilities who require alternative means for communication of program information (Braille, large print, audiotape, etc.) should contact USDA's TARGET Center at (202) 720-2600 (voice and TDD).

To file a complaint of discrimination, write to USDA, Assistant Secretary for Civil Rights, Office of the Assistant Secretary for Civil Rights, 1400 Independence Avenue, S.W., Stop 9410, Washington, DC 20250-9410, or call toll-free at (866) 632-9992 (English) or (800) 877-8339 (TDD) or (866) 377-8642 (English Federal-relay) or (800) 845-6136 (Spanish Federal-relay). USDA is an equal opportunity provider and employer.