



United States Department of Agriculture
National Agricultural Statistics Service



**PROSPECTIVE PLANTINGS
GRAIN STOCKS
RICE STOCKS**

Executive Summary

MARCH 28, 2013

12:00 PM



Contents

Field Crops	Stocks
Principal Crops Planted Acres	Corn
Feed Grain Acres	Soybean
Food Grain Acres	All Wheat
Oilseed Acres	Rough Rice
Other Crop Acres	

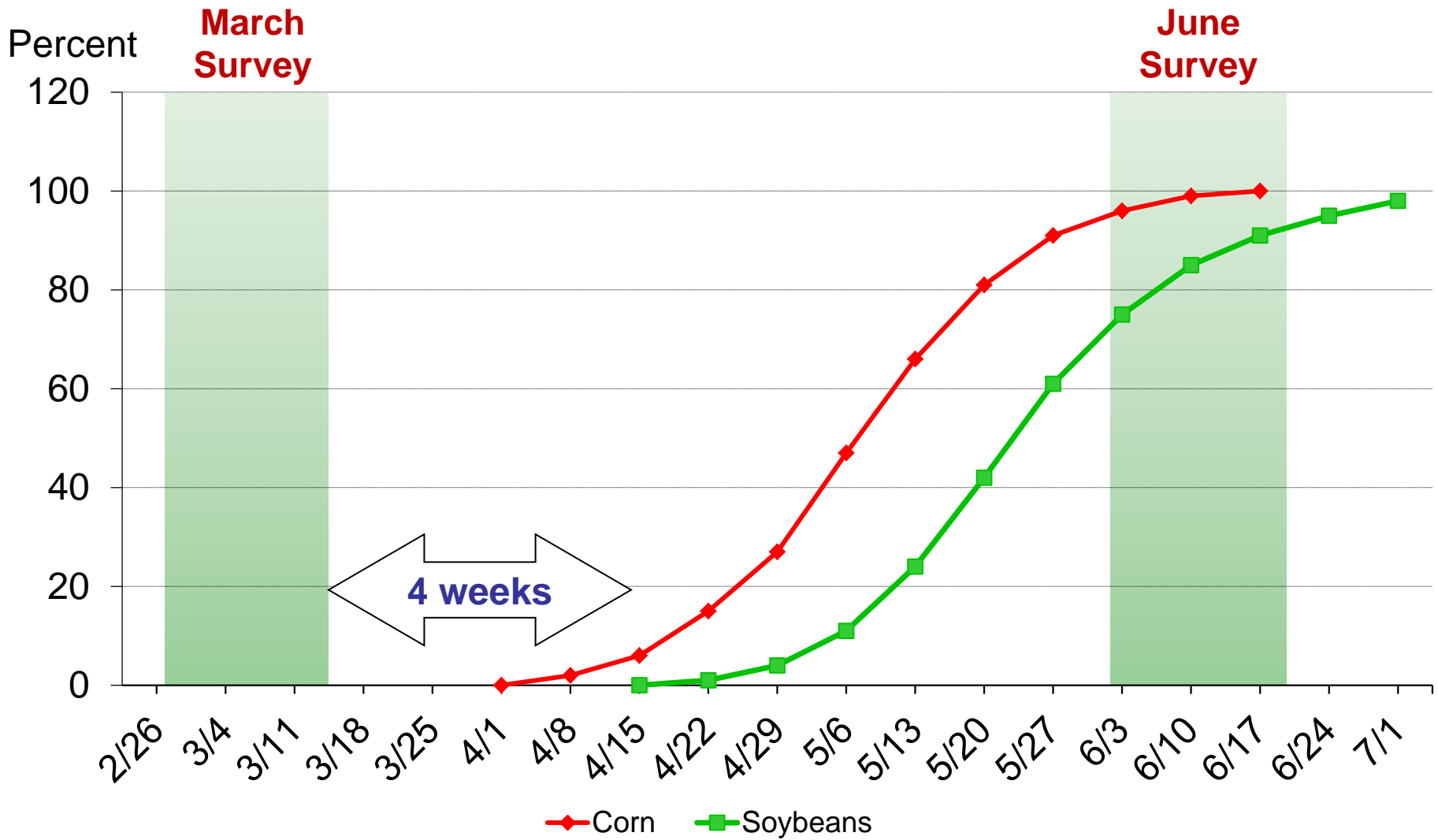


Survey Overview

	March Ag Survey	Off-Farm Grain Stocks Survey
Survey Type	Farmer Reported	Reported
Collection Method	Mail, Phone, Internet, Personal Interview	Mail, Phone, Internet, Personal Interview
Items Collected	Acreage Intentions, On-Farm Stocks	Grains and Oilseeds On Hand
States	All except AK and HI	All except AK and HI
Sample Size	~ 84,000	~ 8,800 Facilities
Collection Period	Feb 27 – Mar 18	Feb 27 – Mar 18

Acres Intended vs. Actual Planted Acres

Usual Planting Progress





U.S. Principal Crops Planted Acres

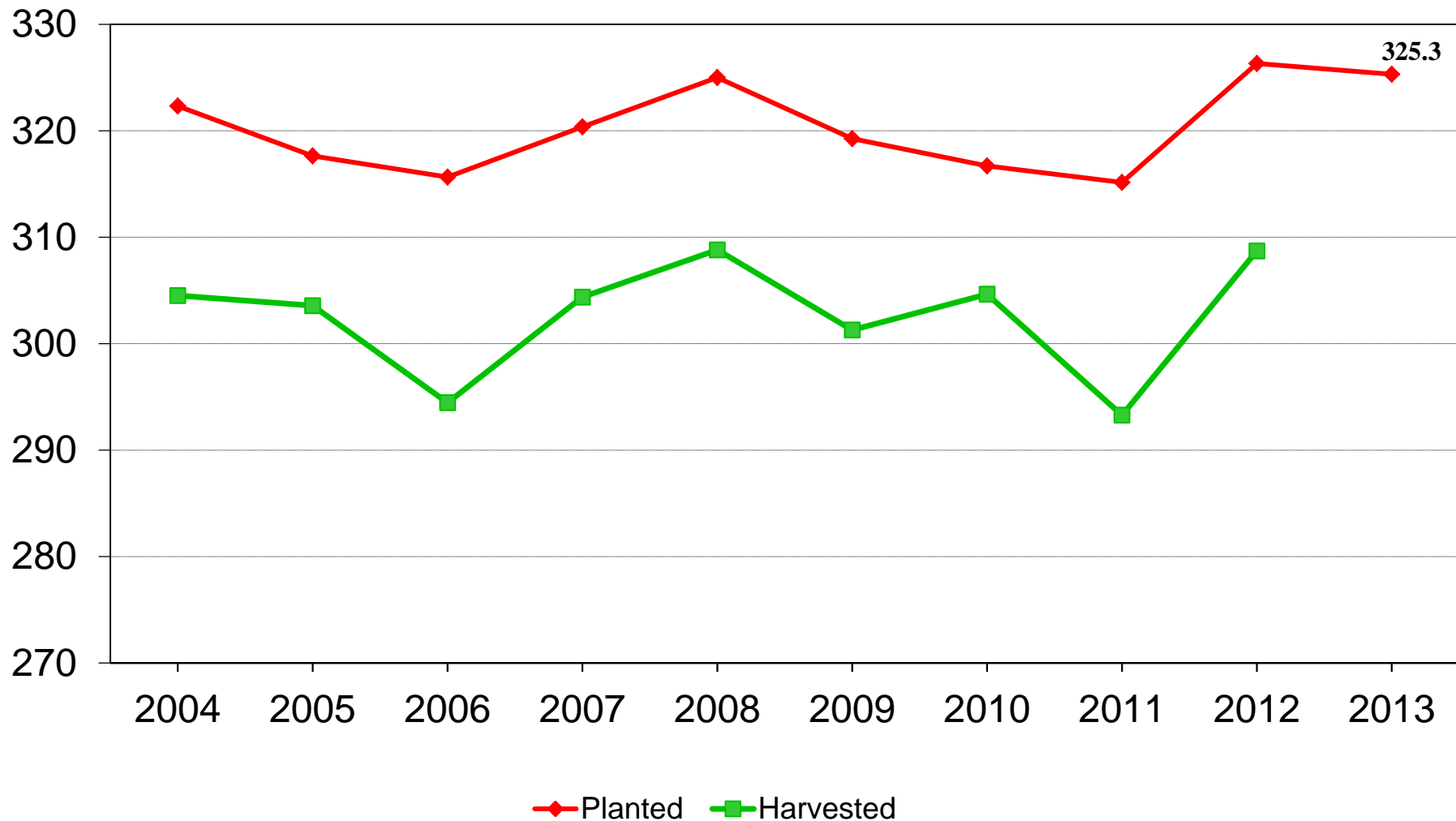
Year	Principal Crops	Change from Previous Year
<i>--Million Acres--</i>		
2004	322.3	- 3.4
2005	317.6	- 4.7
2006	315.6	- 2.0
2007	320.4	+ 4.7
2008	325.0	+ 4.6
2009	319.3	- 5.7
2010	316.7	- 2.6
2011	315.1	- 1.6
2012	326.3	+11.2
2013	325.3	- 1.0



U.S. Principal Crop Acres

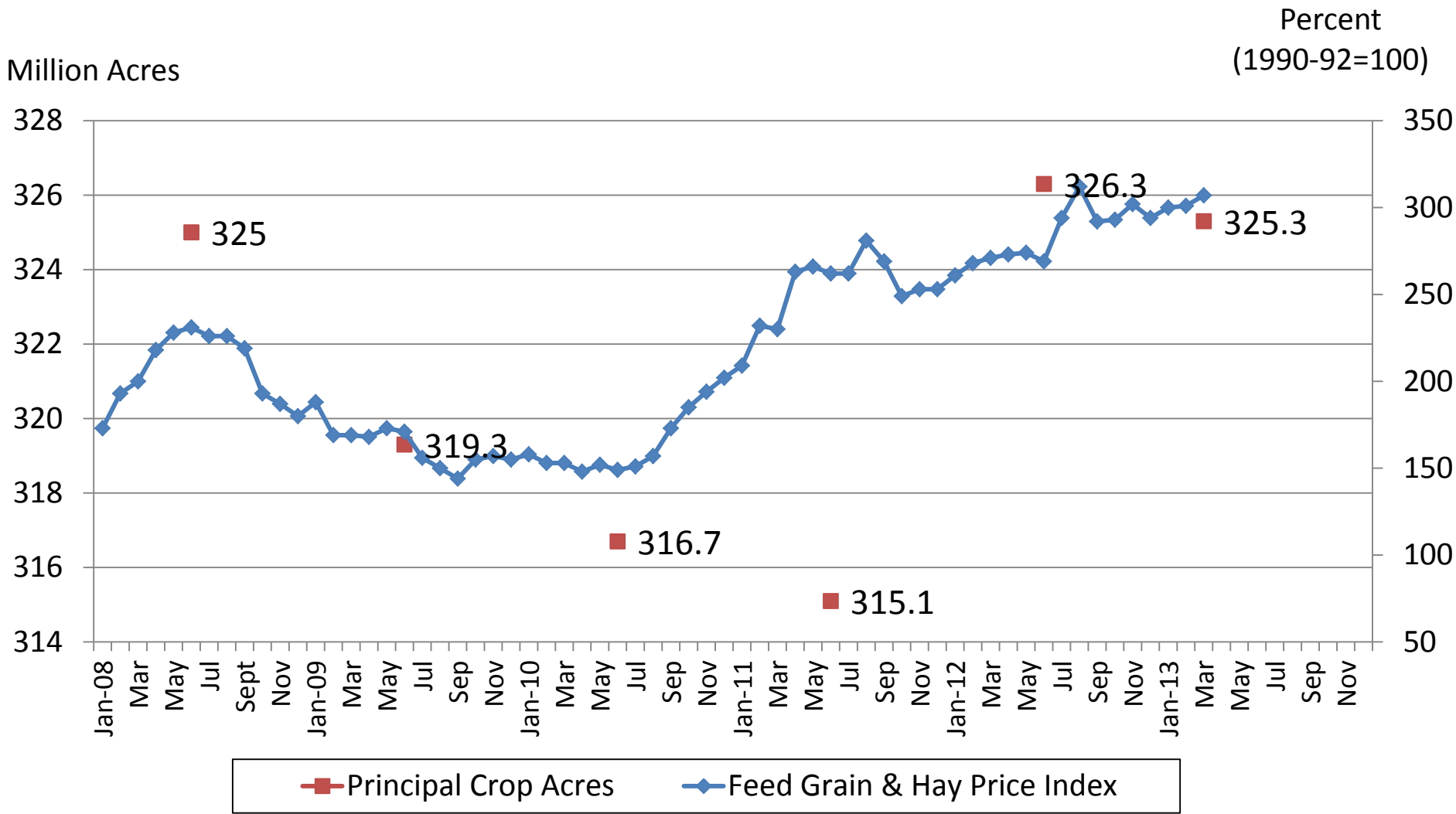


Million acres





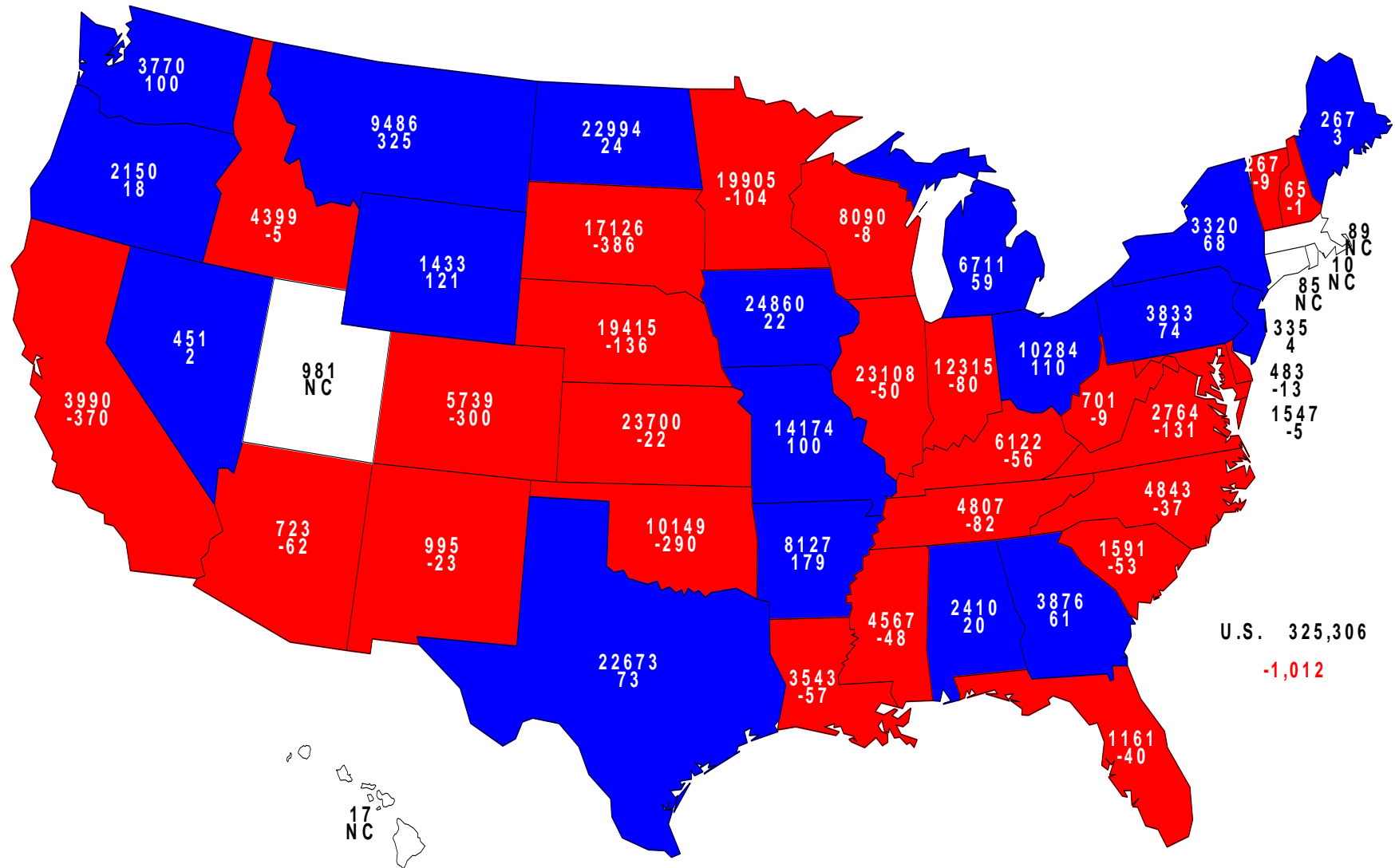
Feed Grain & Hay Price Index and Principal Crop Acres (2008-2013)





2013 Principal Crops Planted

Acres (000) and Change From Previous Year

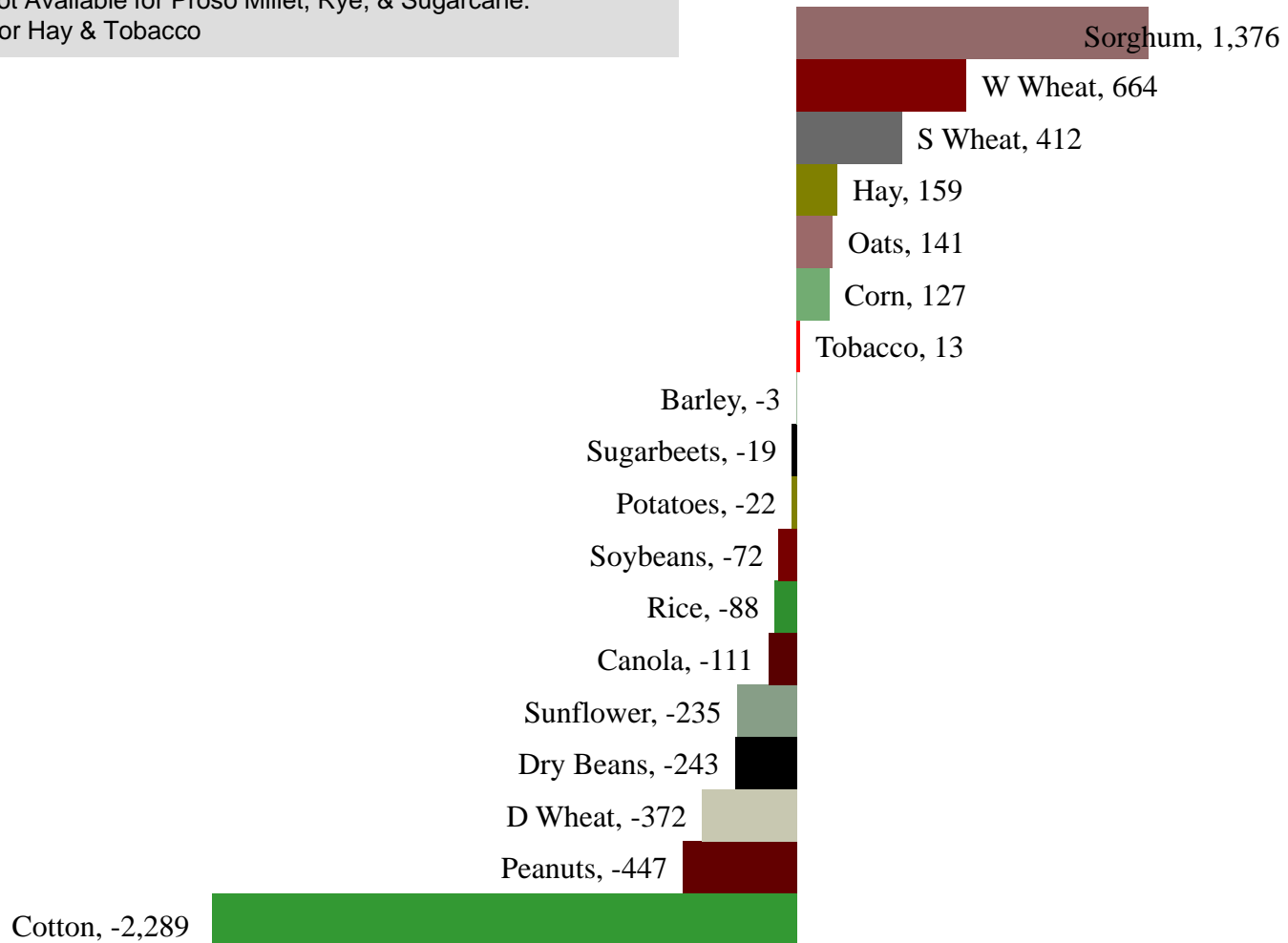




Change in Planted Acres (000)

2013 Compared With 2012

2013 Estimates Not Available for Proso Millet, Rye, & Sugarcane.
Harvested Acres for Hay & Tobacco

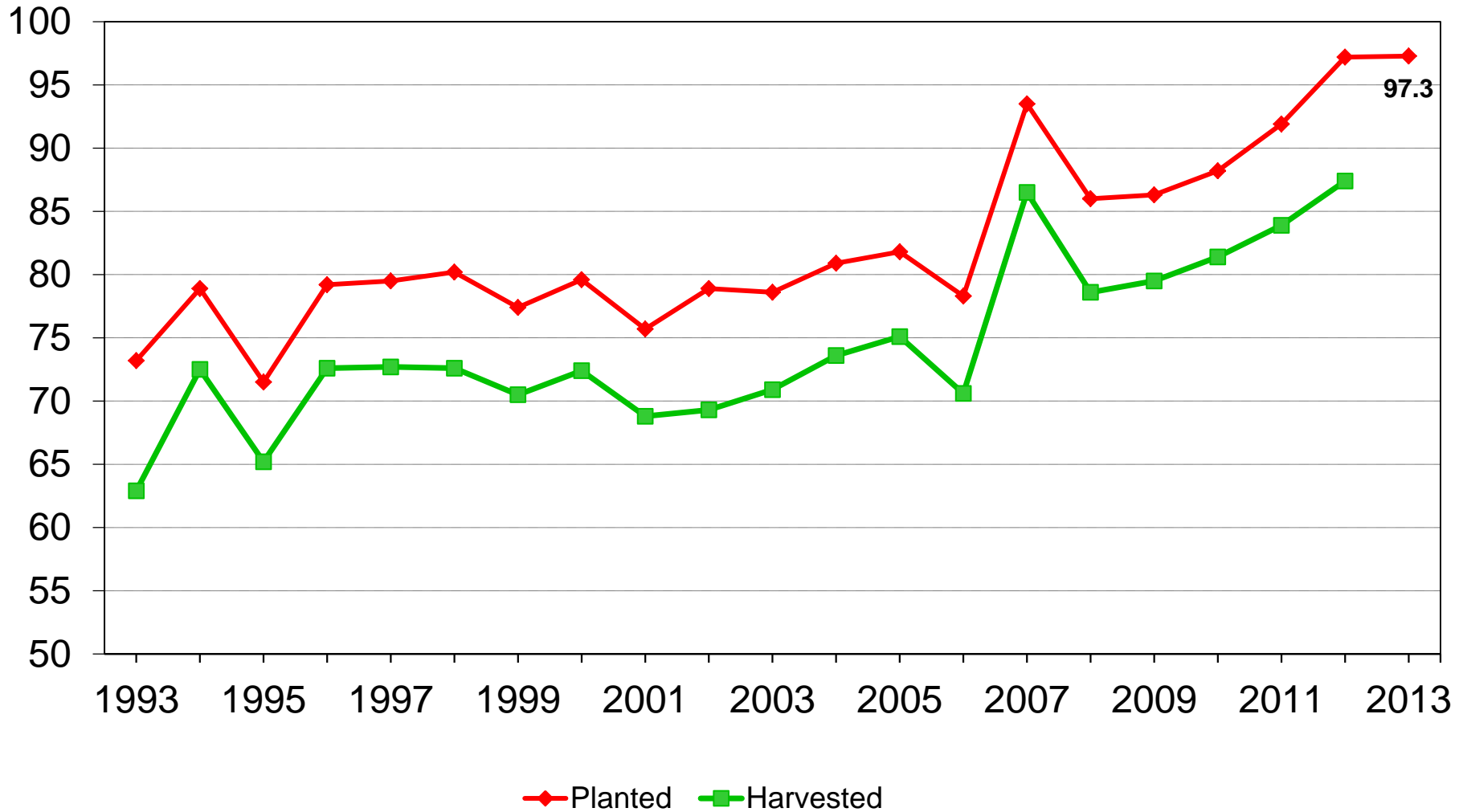




U.S. Corn Acres



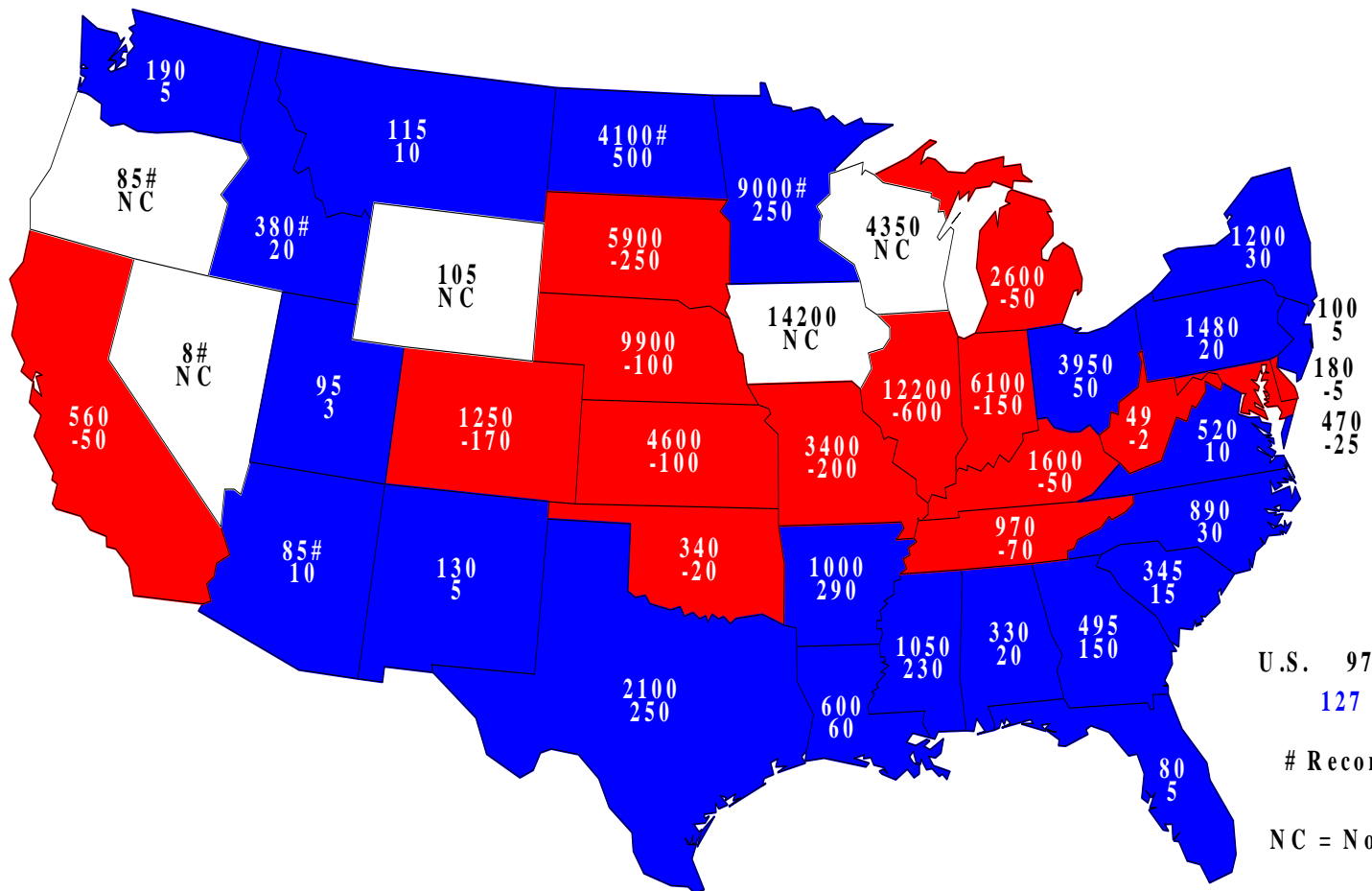
Million acres





2013 Corn Planted

Acres (000) and Change From Previous Year

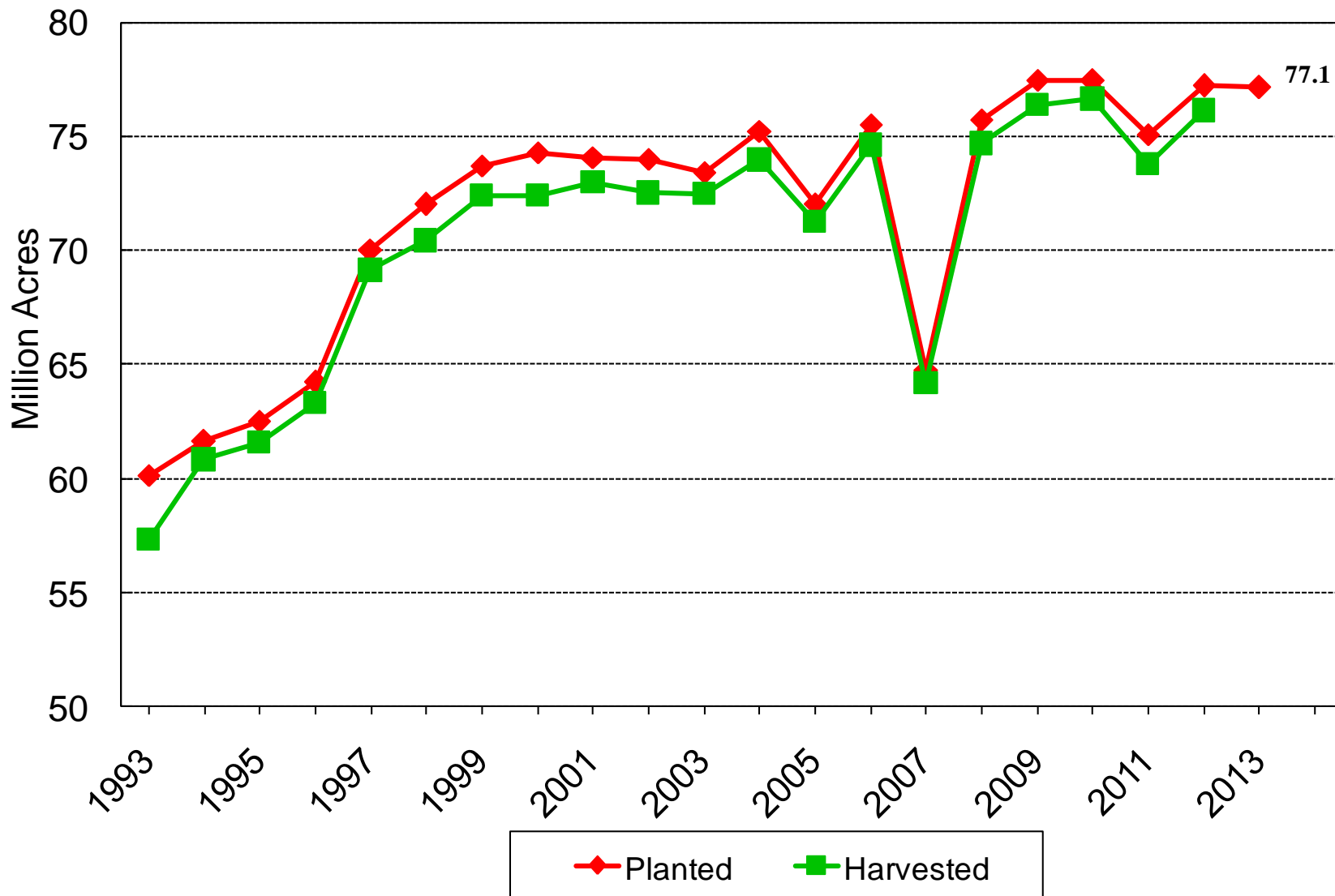


U.S. 97,282
127

Record High

NC = No Change

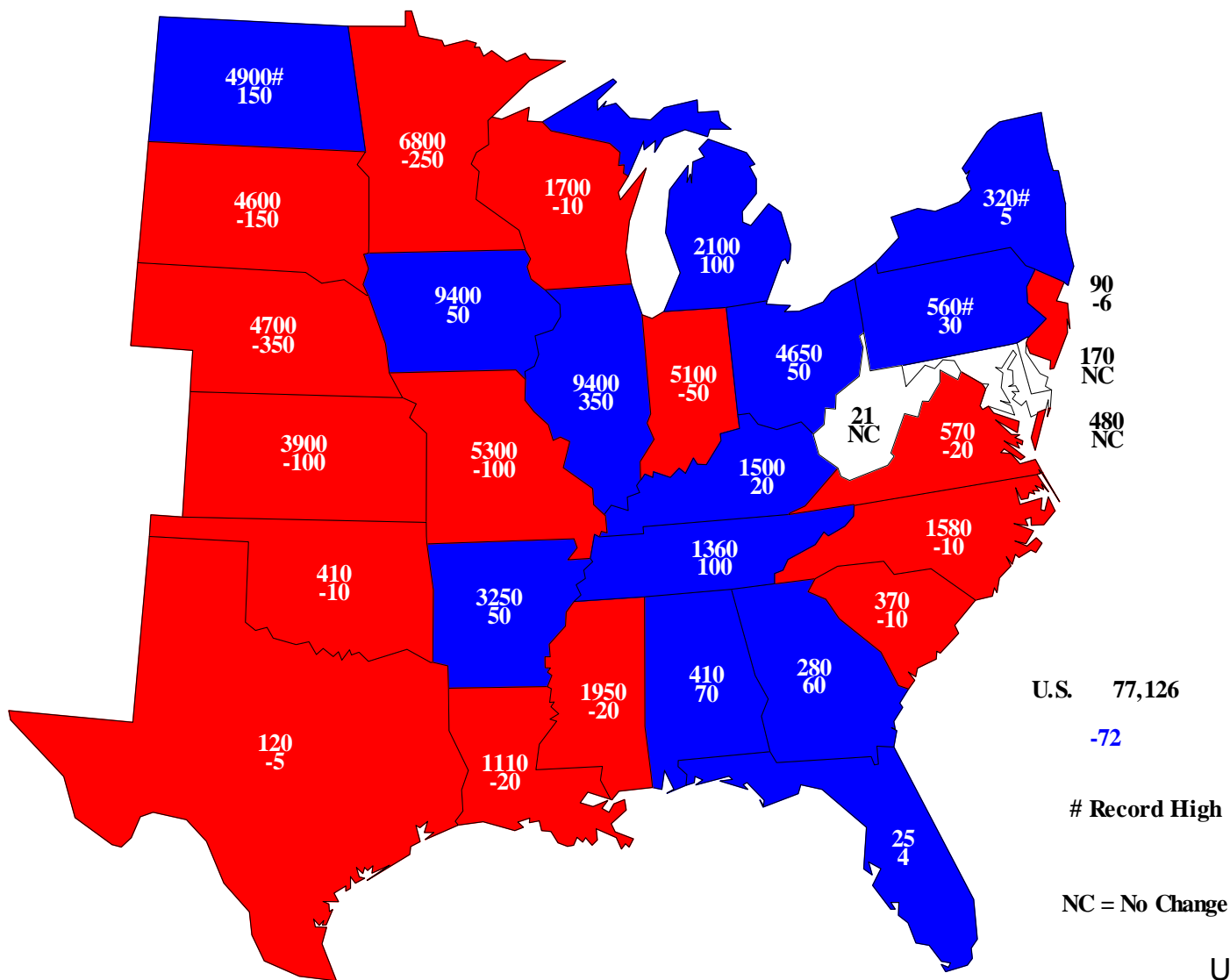
U.S. Soybean Acres





2013 Soybeans Planted

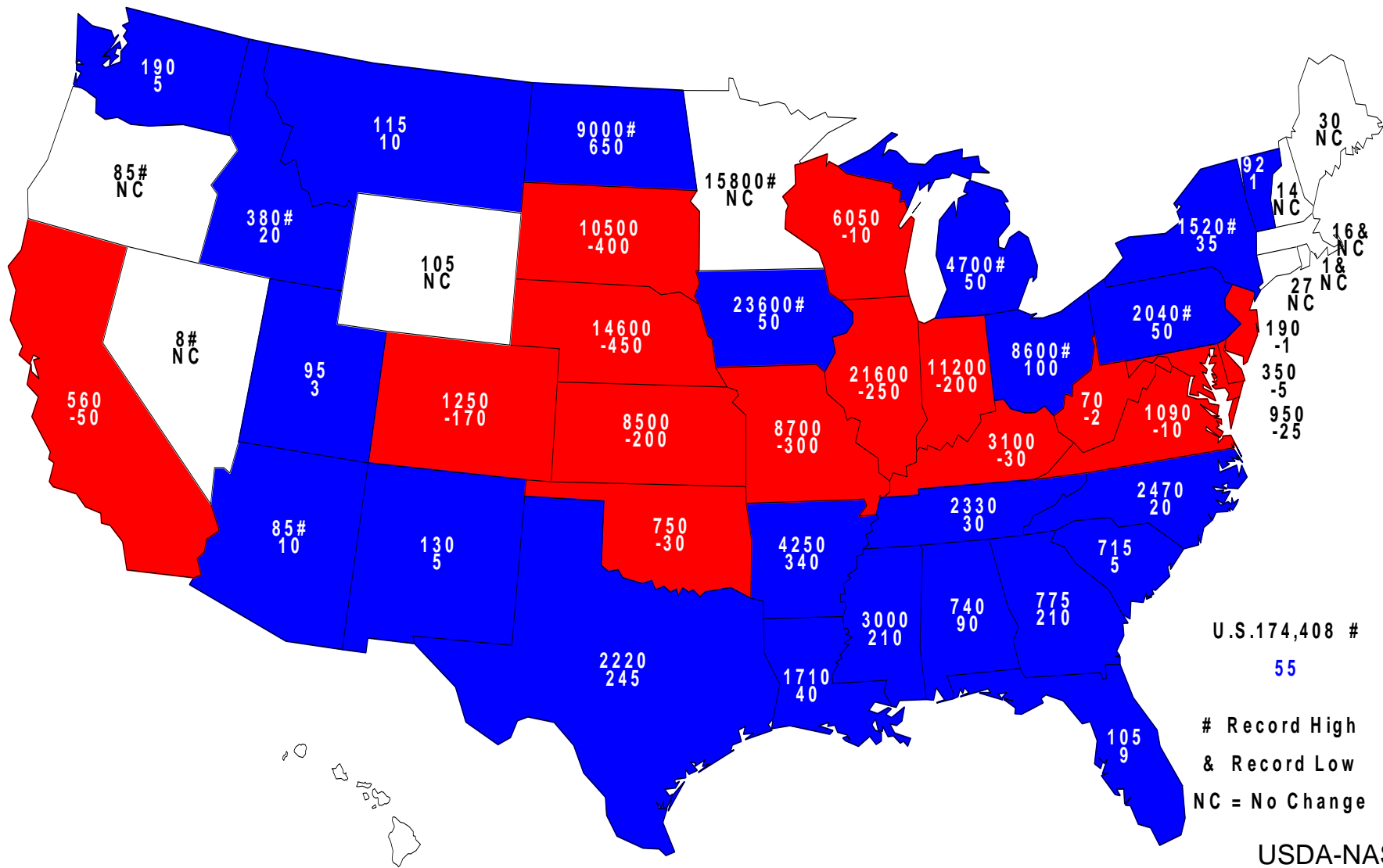
Acres (000) and Change From Previous Year





2013 Combined Corn & Soybeans Planted

Acres (000) and Change From Previous Year



U.S. 174,408 #
55
Record High
& Record Low
NC = No Change

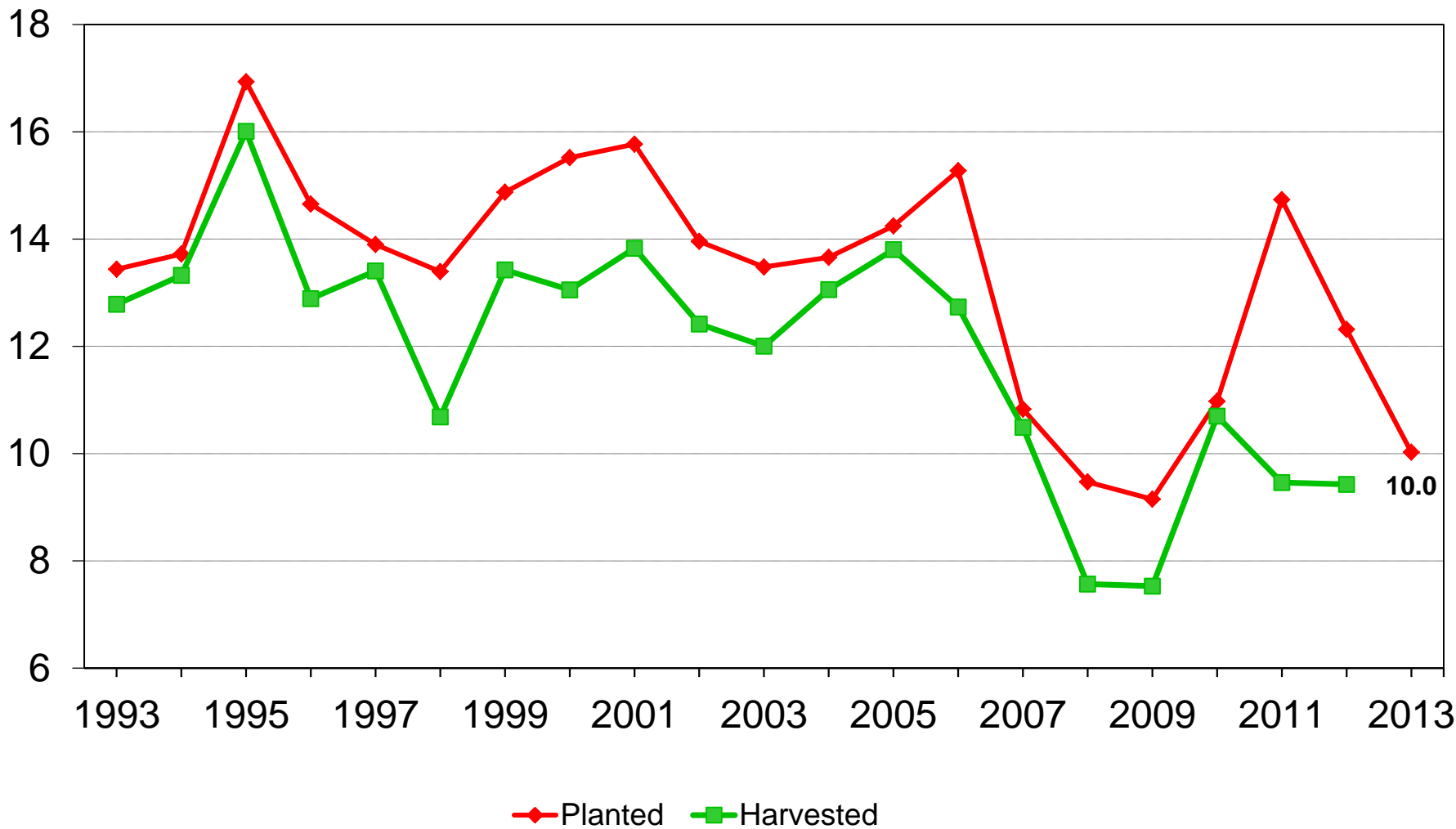
USDA-NASS
03-28-13



U.S. All Cotton Acres



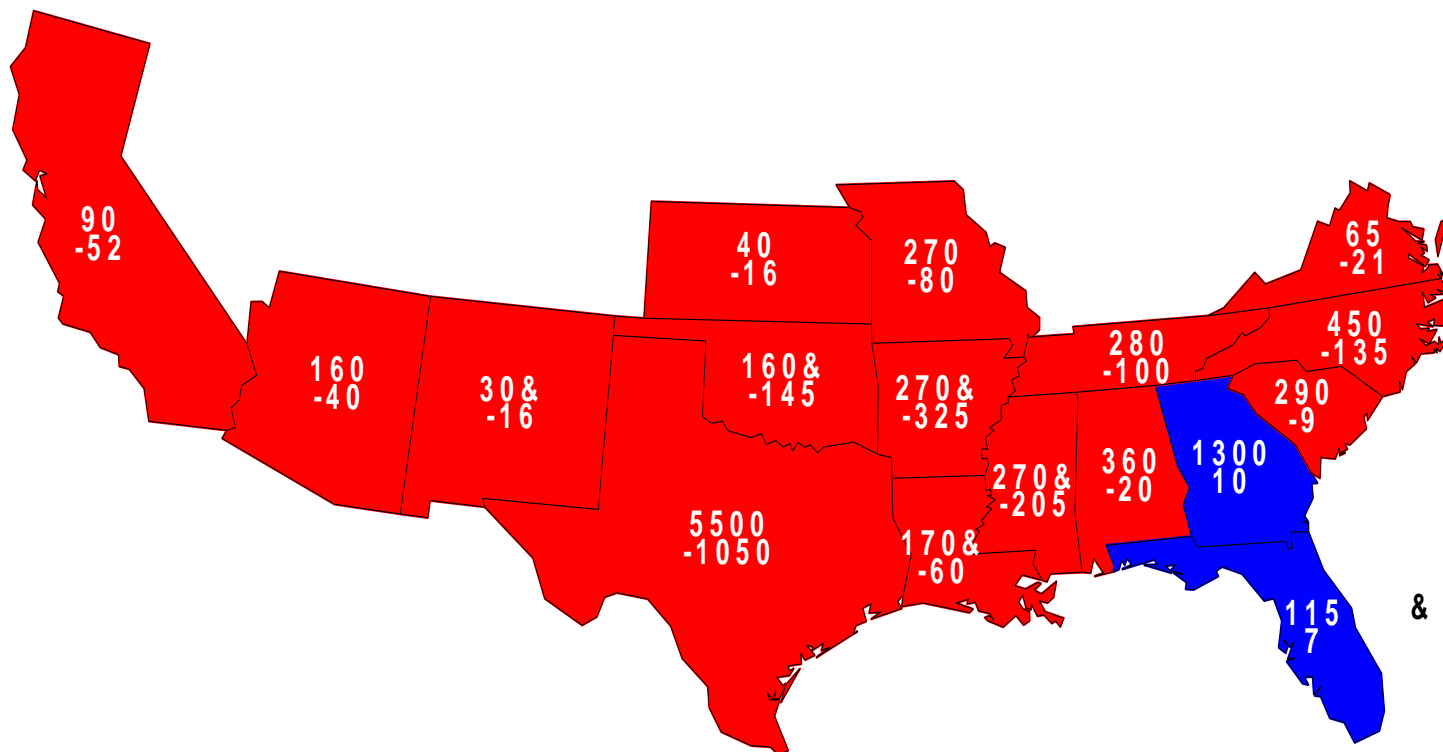
Million acres





2013 Upland Cotton Planted

Acres (000) and Change From Previous Year



U.S. 9,820
-2,257

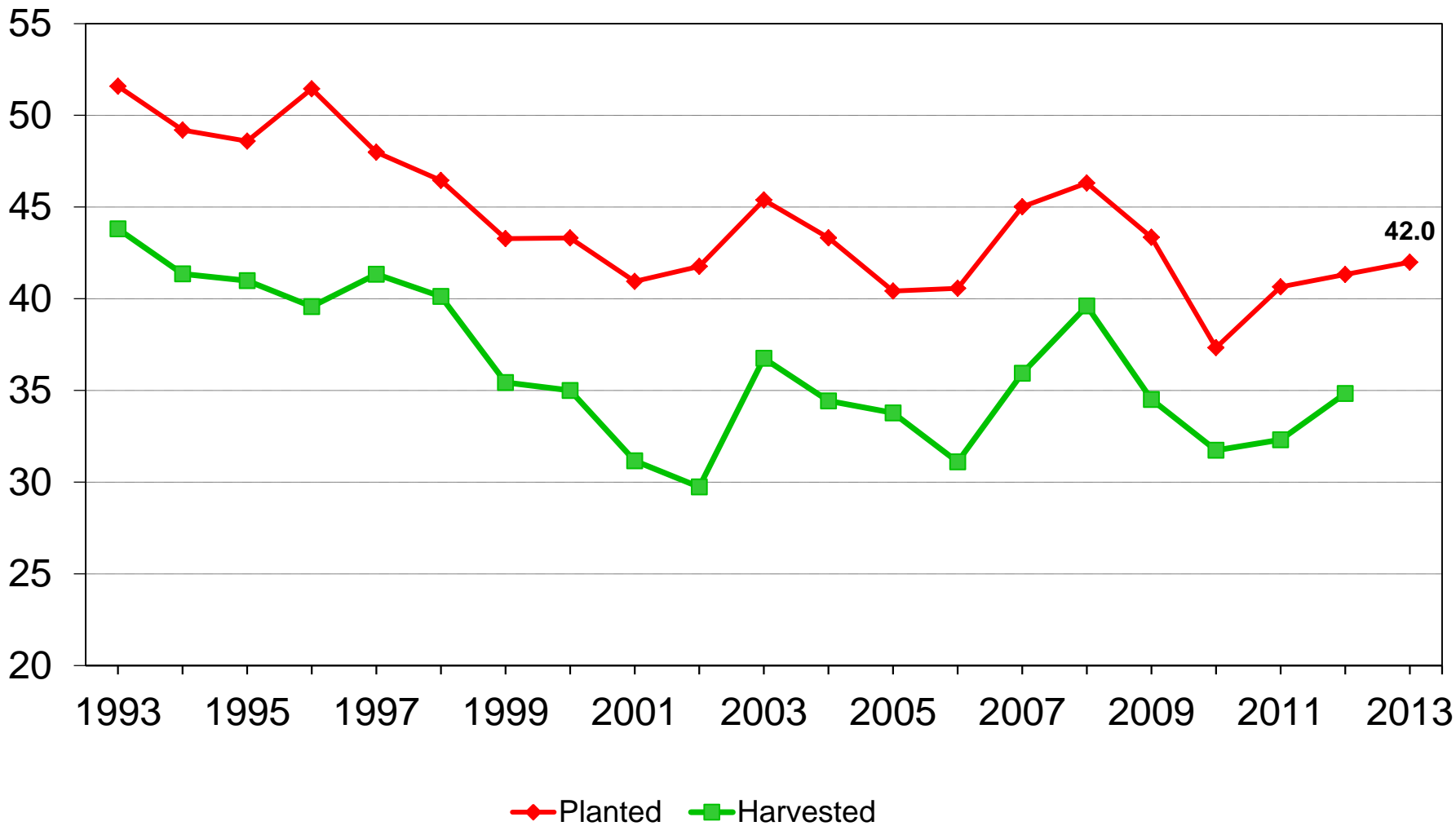
& = Record Low



U.S. Winter Wheat Acres

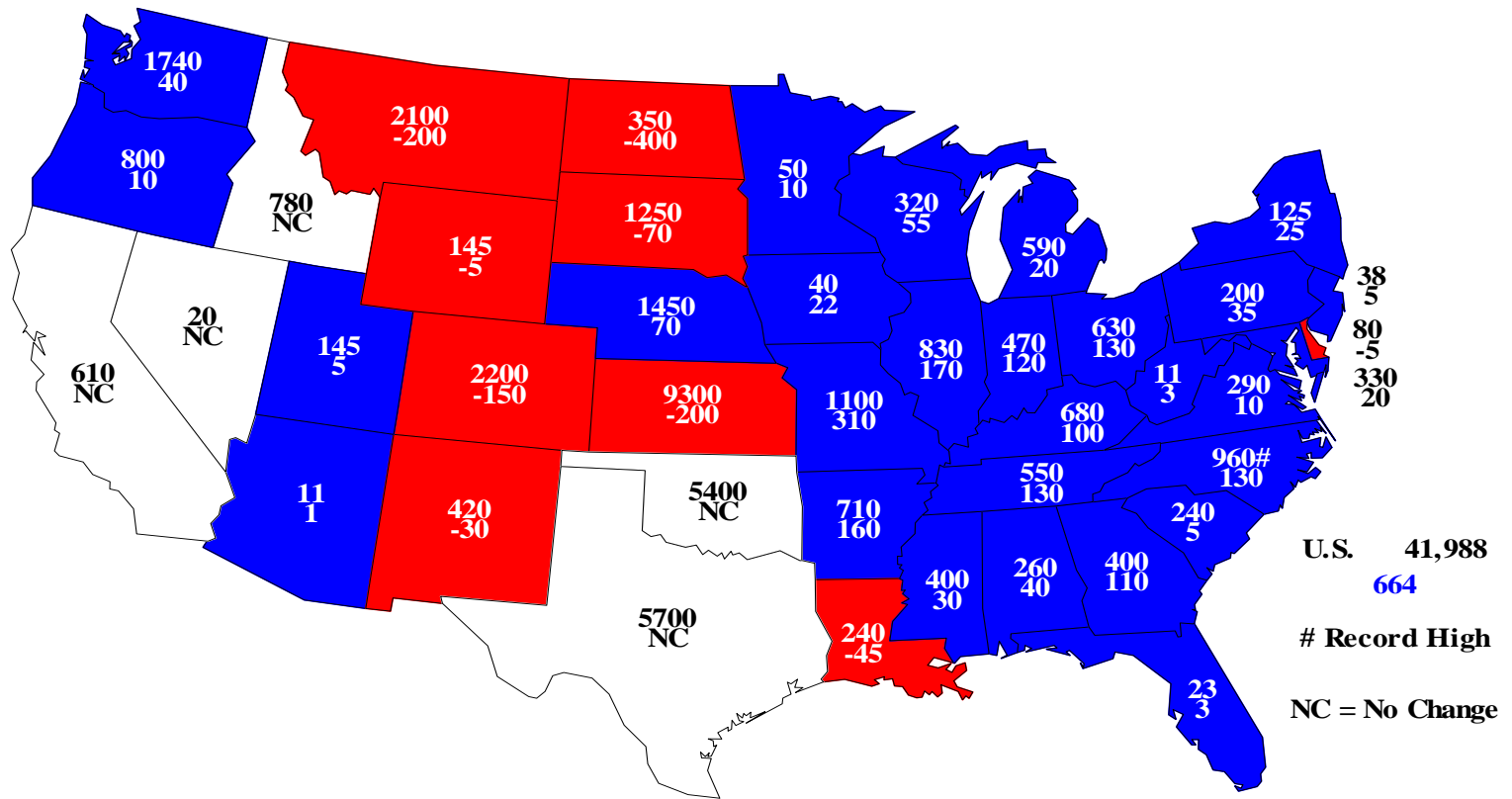


Million acres



Winter Wheat Planted, 2013

Acres(000) and Change From Previous Year

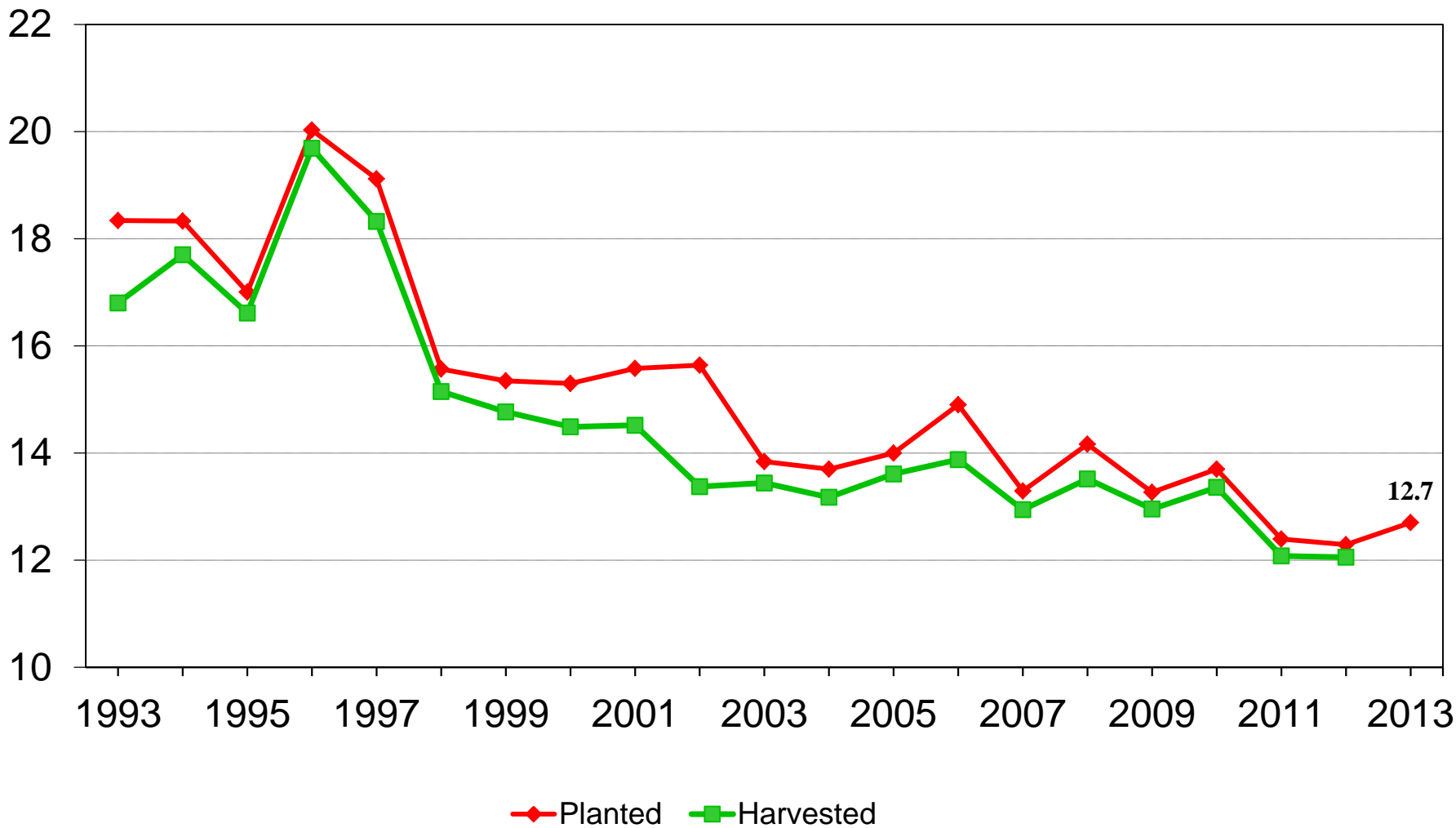




U.S. Other Spring Wheat Acres



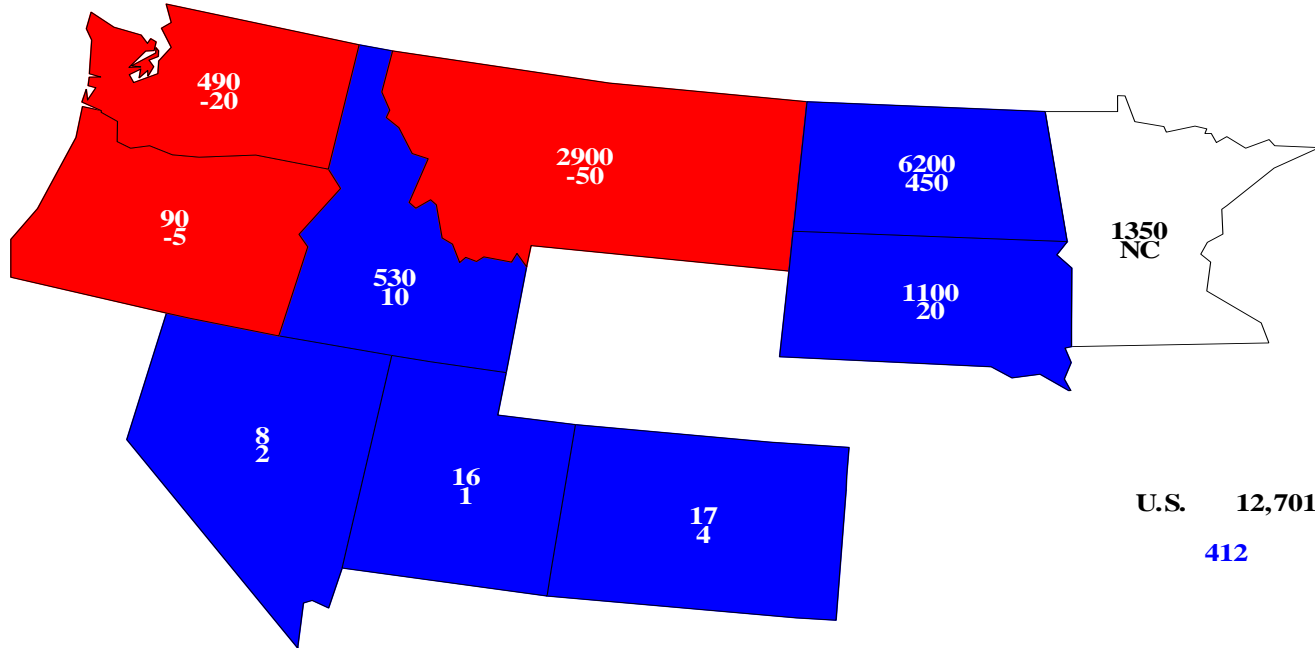
Million acres





Other Spring Wheat Planted, 2013

Acres(000) and Change From Previous Year



U.S. 12,701
412

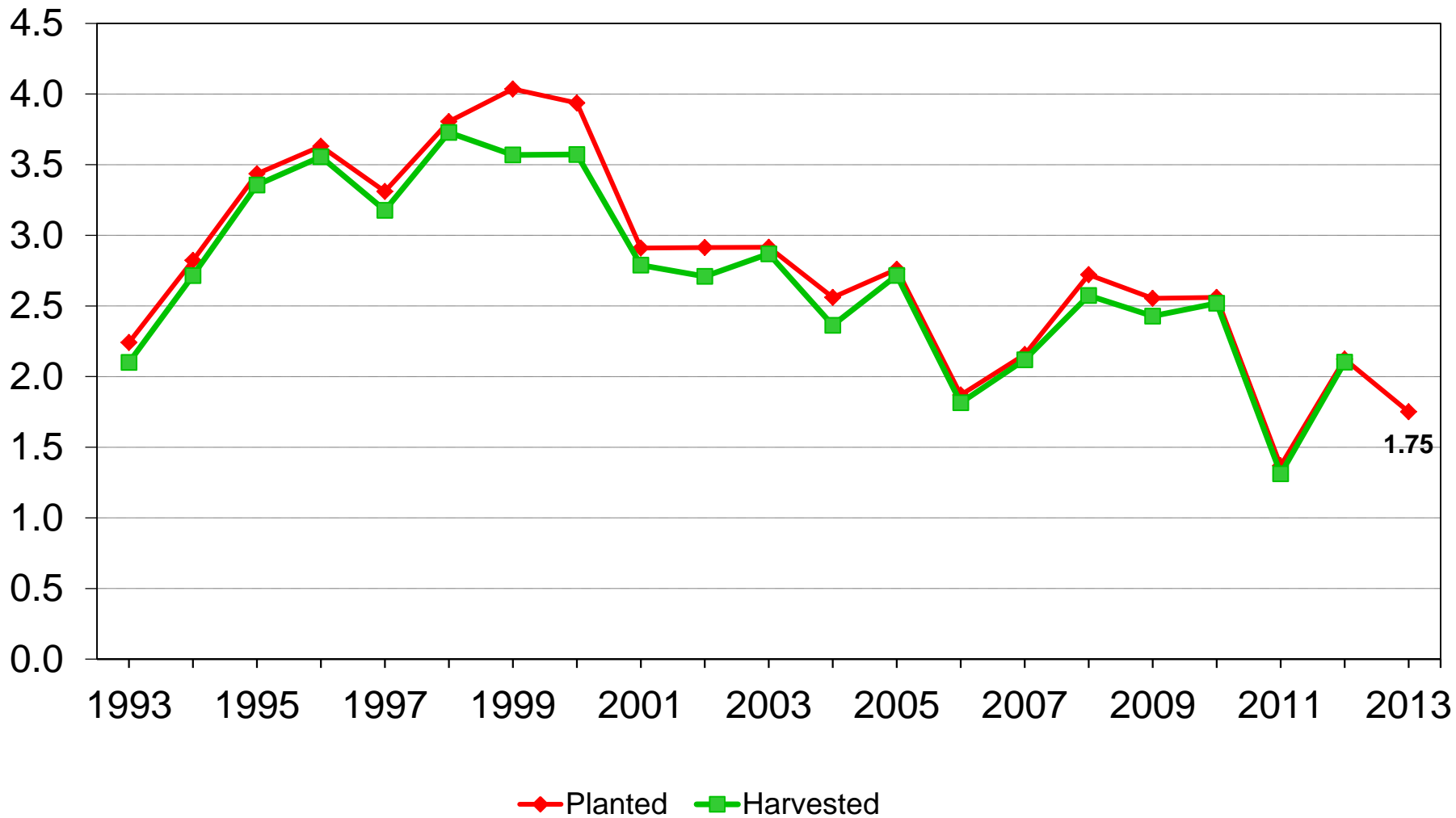
NC = No Change



U.S. Durum Wheat Acres



Million acres





March 2013 Prospective Plantings

Feed Grains	2013 Intentions	2012 Planted	% Change
	<i>--Million Acres--</i>		
Corn	97.3	97.2	+0.1
Sorghum	7.62	6.24	+22.0
Oats	2.90	2.76	+5.1
Barley	3.63	3.64	-<0.1



March 2013 Prospective Plantings

Food Grains	2013 Intentions	2012 Planted	% Change
	<i>--Million Acres--</i>		
All Wheat	56.4	55.7	+1.3
Winter Wheat	42.0	41.3	+1.6
Durum Wheat	1.75	2.12	-17.5
Other Spring Wheat	12.7	12.3	+3.4
Rice	2.61	2.70	-3.3



March 2013 Prospective Plantings

Oilseeds	2013 Intentions	2012 Planted	% Change
	<i>--Million Acres--</i>		
Soybeans	77.1	77.2	-0.1
Peanuts	1.19	1.64	-27.3
Sunflower	1.68	1.92	-12.2
Canola	1.65	1.77	-6.3
Flaxseed	0.272	0.344	-20.9
All Cotton	10.0	12.3	-18.6
Upland Cotton	9.82	12.1	-18.7
American Pima	0.206	0.238	-13.6



March 2013 Prospective Plantings

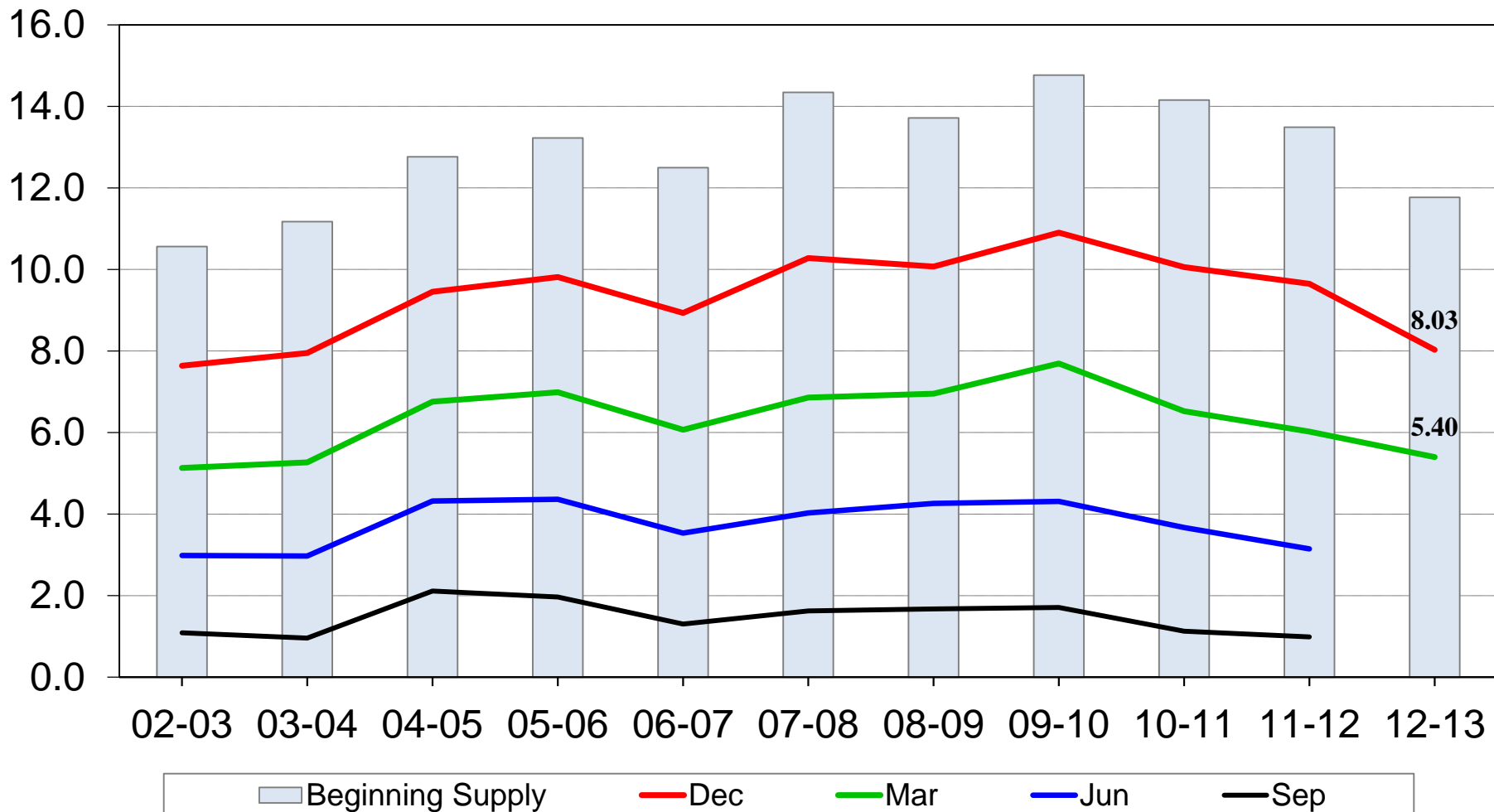
Other Crops	2013 Intentions	2012 Planted	% Change
<i>--Million Acres--</i>			
All Hay (Harvested)	56.4	56.3	+0.3
Sugarbeets	1.21	1.23	-1.5
Tobacco (Harvested)	.349	.336	+3.9
Spring Potatoes	.075	.097	-22.6
Sweet Potatoes	.122	.131	-6.3
Dry Edible Beans	1.50	1.74	-13.9
Dry Edible Peas	.850	.649	+31.0
Austrian Winter Peas	.019	.019	NC
Lentils	.335	.463	-27.6



U.S. Corn Stocks

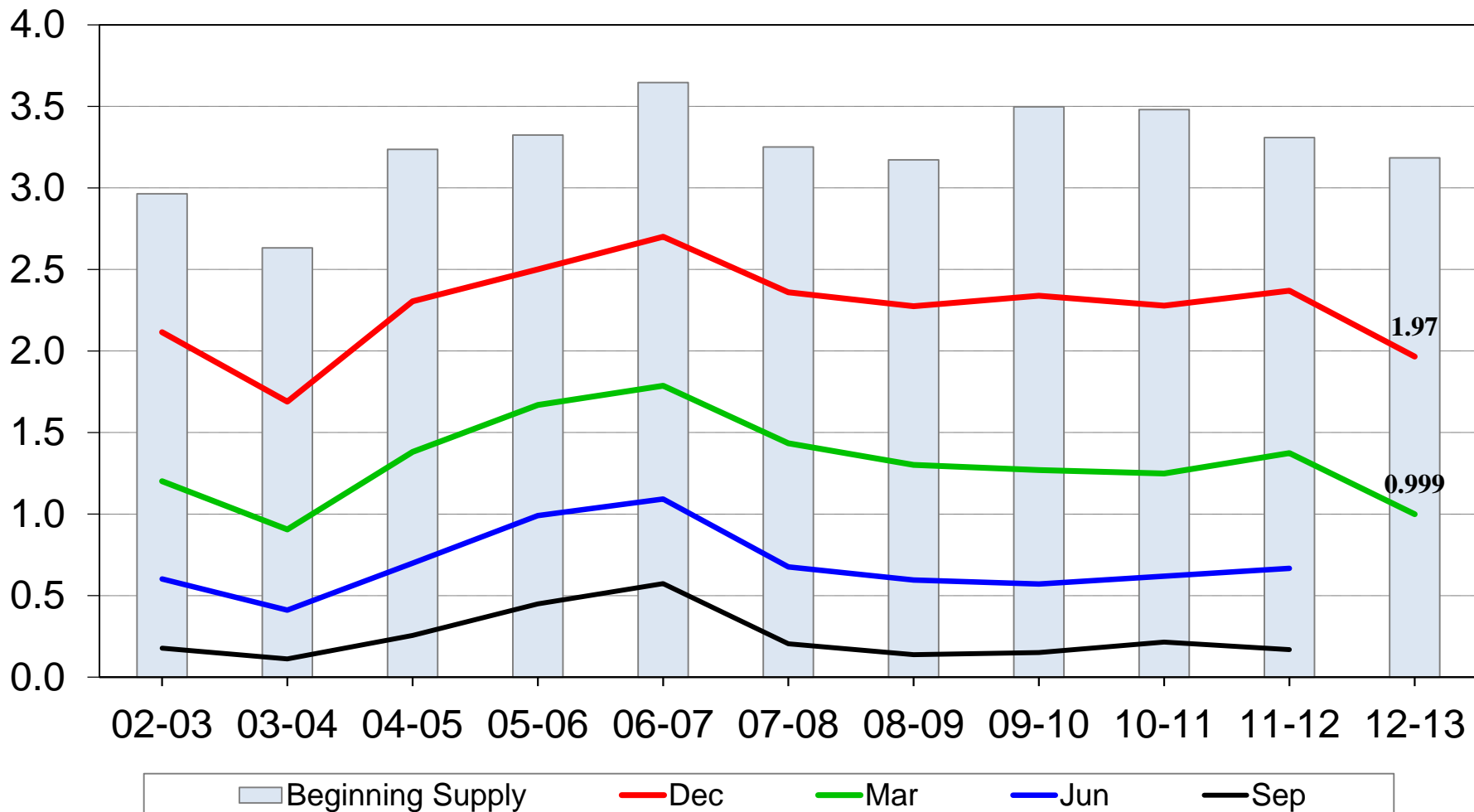


Billion bushels



U.S. Soybean Stocks

Billion bushels

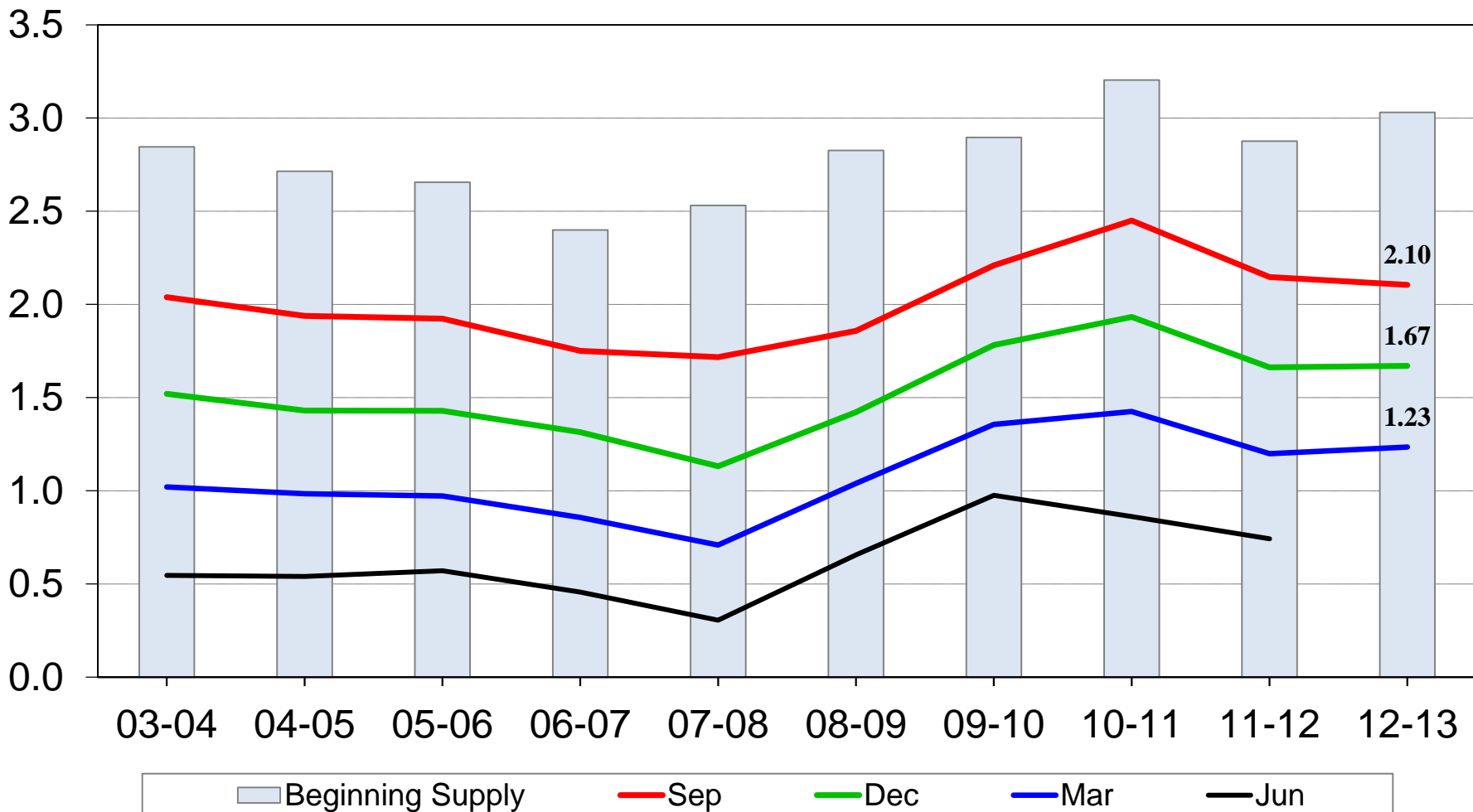




U.S. All Wheat Stocks



Billion bushels

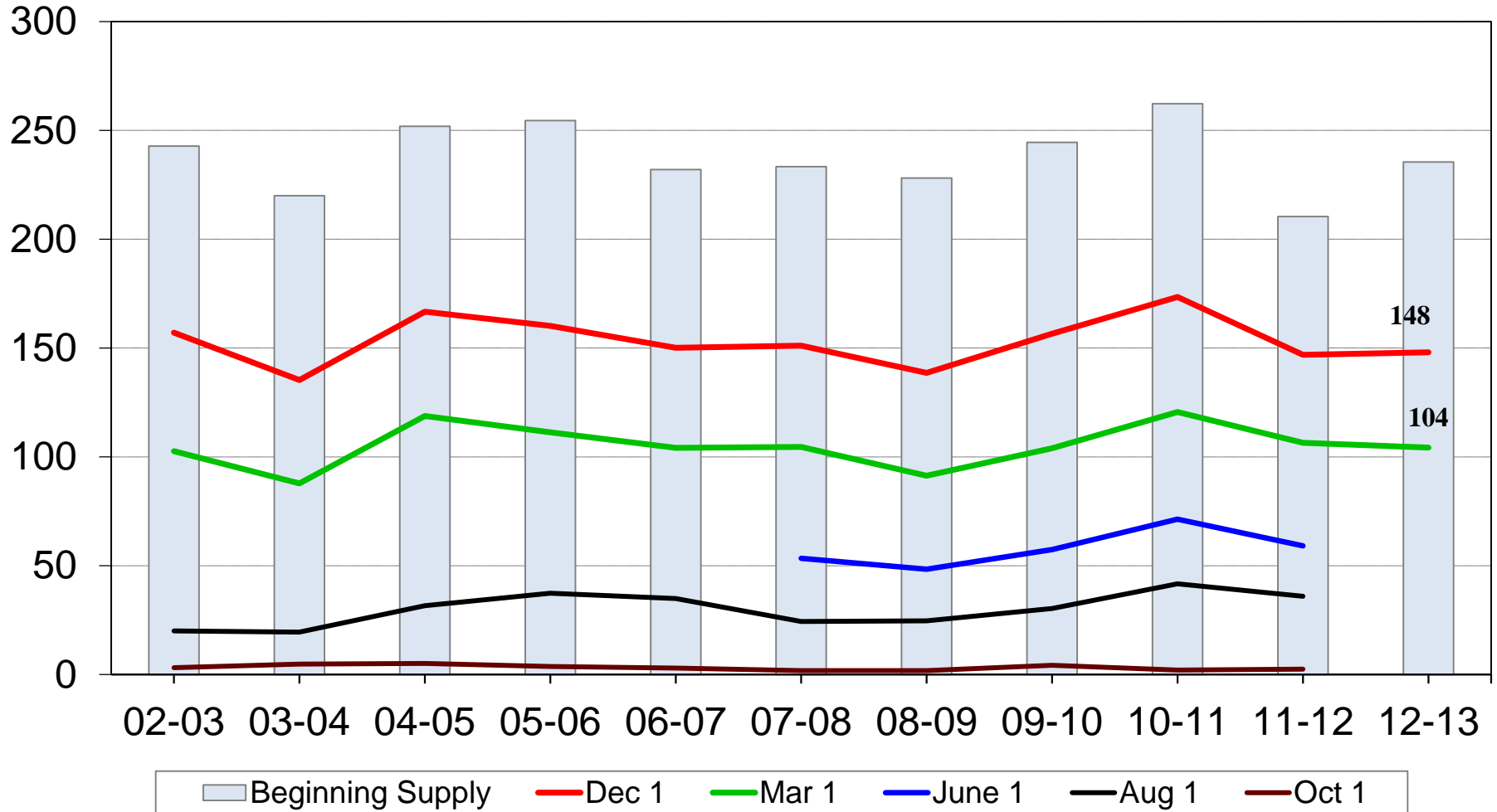




U.S. Rough Rice Stocks



Million cwt





United States Department of Agriculture
National Agricultural Statistics Service



Upcoming Reports

March 28	Hogs and Pigs
April 10	Crop Production
April 19	Cattle on Feed
April 30	Agricultural Prices



United States Department of Agriculture
National Agricultural Statistics Service



All Reports Available At

www.nass.usda.gov

For Questions

202-720-2127

800-727-9540

nass@nass.usda.gov